

ISTRUZIONI DI MONTAGGIO

NEOSCENICA®

INCASSO

V2 CIELINO NON PORTANTE – 2 BATTENTI CON VITI LATERALI

ATTENZIONE



DISTINTA

- 1 Zanzariera (x2)
- 2 Profilo cassa facile (x4)
- 3 Profilo di scorrimento (opt)
- 4 Tappo cassa facile
- 5 Molla di spinta (x2)
- 6 Gruppo di spinta (x2)
- 7 Staffa incasso cielino debole e Copertura 2 battenti
- 8 Asta (x2)
- 9 Supporto cassetto (x2)
- 10 Piastrina a pavimento

DISTINTA



UTENSILI



LEGENDA



ATTENZIONE



ATTENZIONE

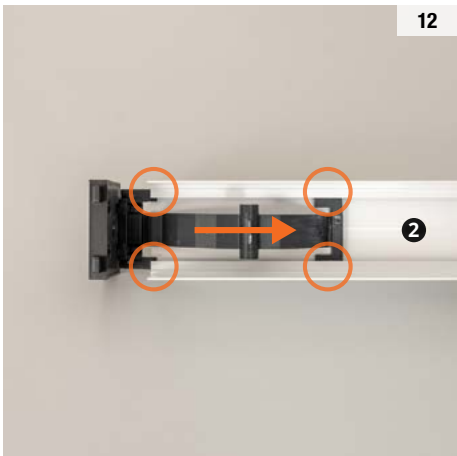
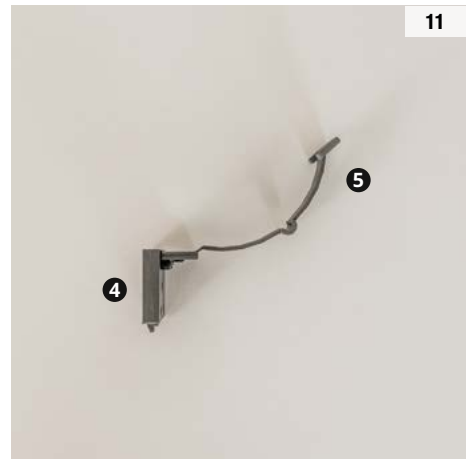
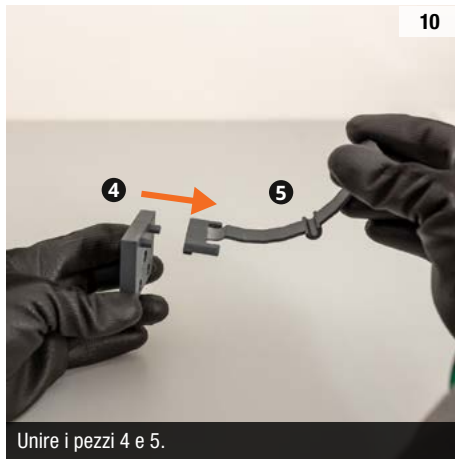
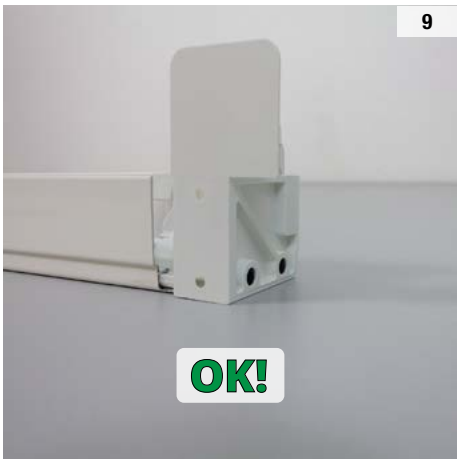
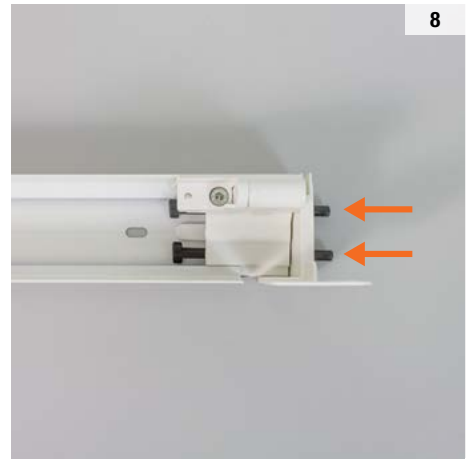
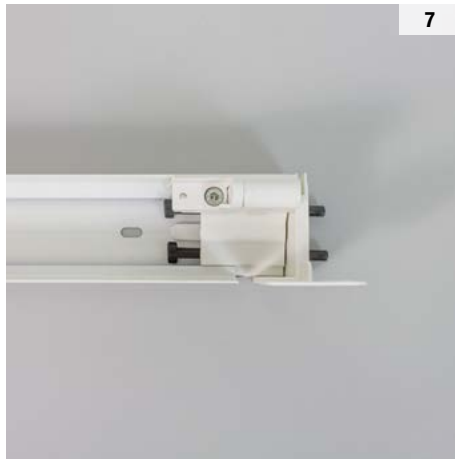
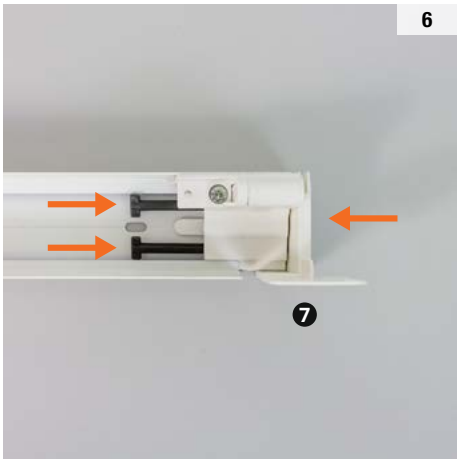
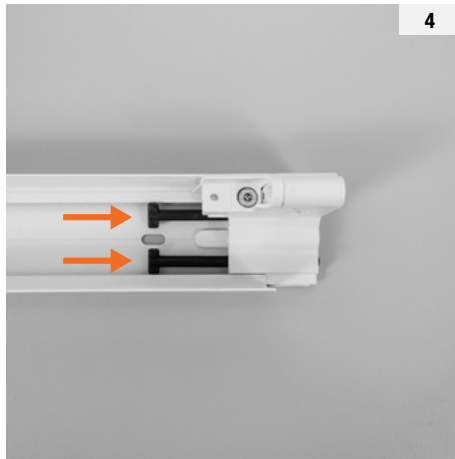
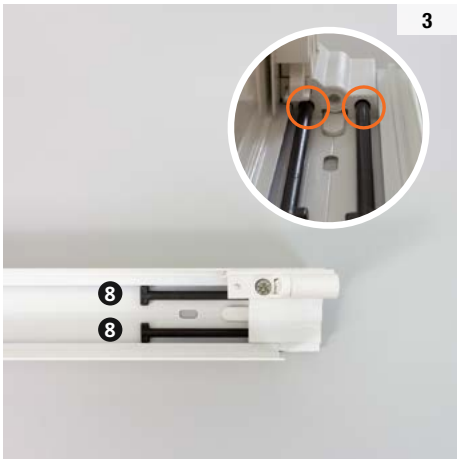


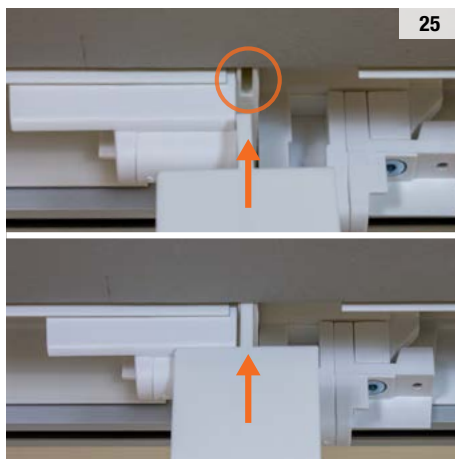
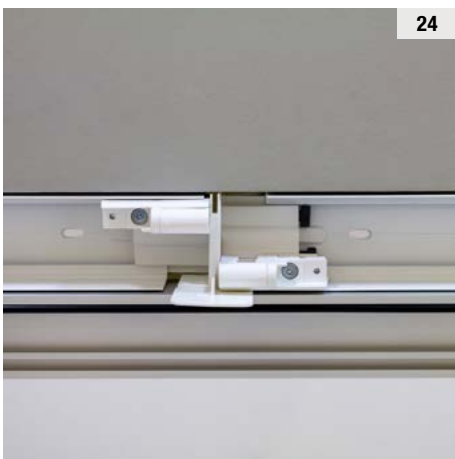
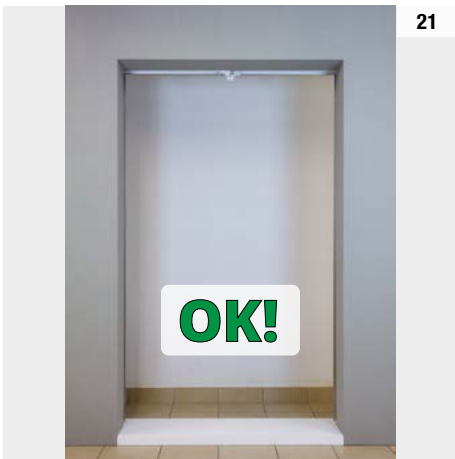
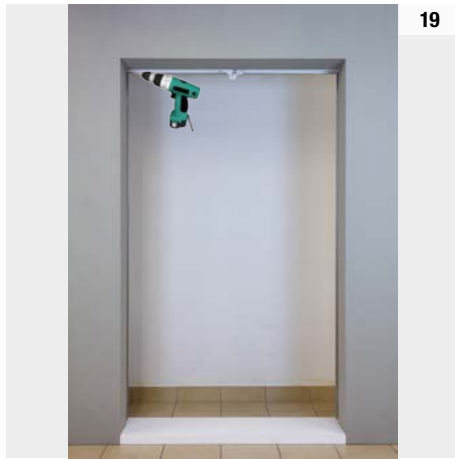
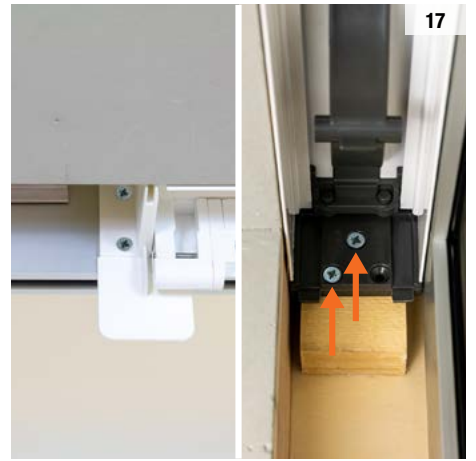
1

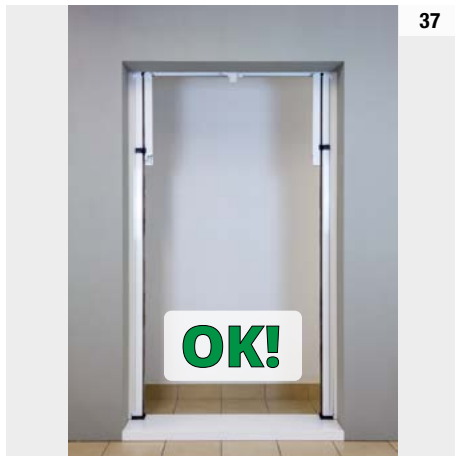
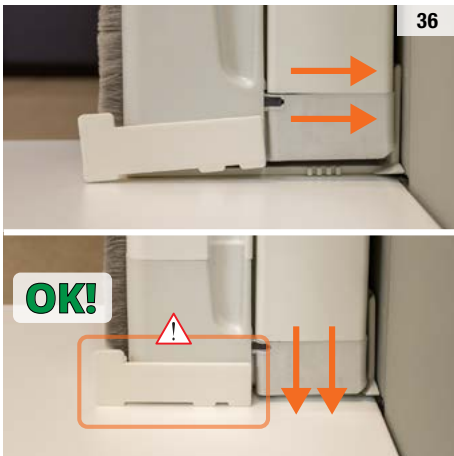
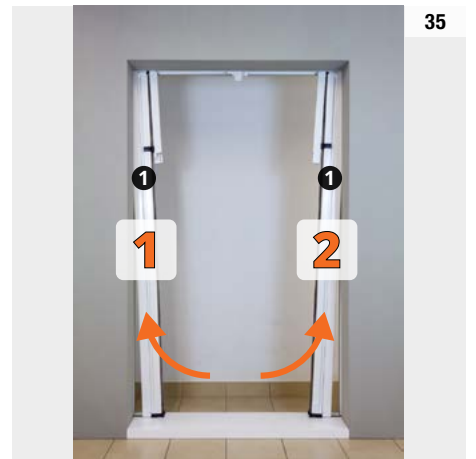
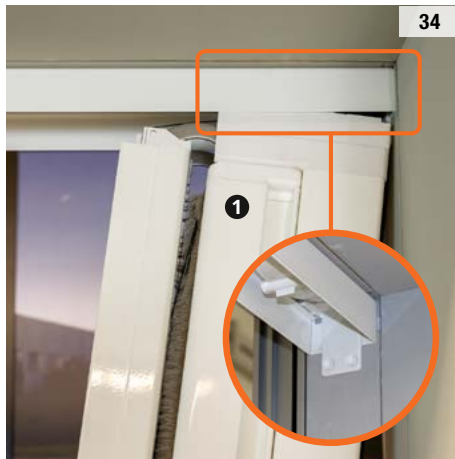


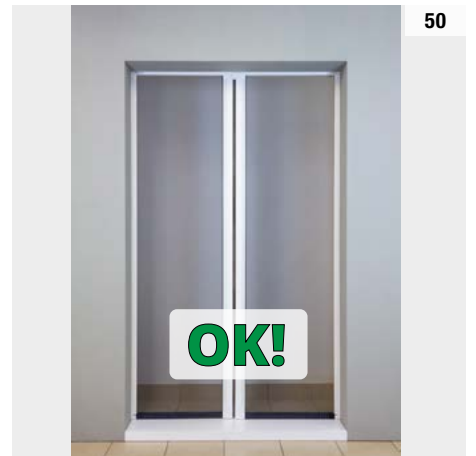
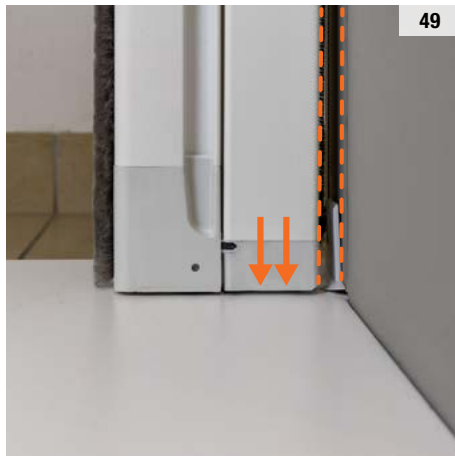
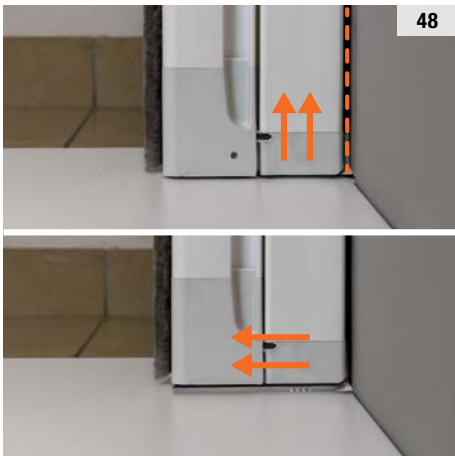
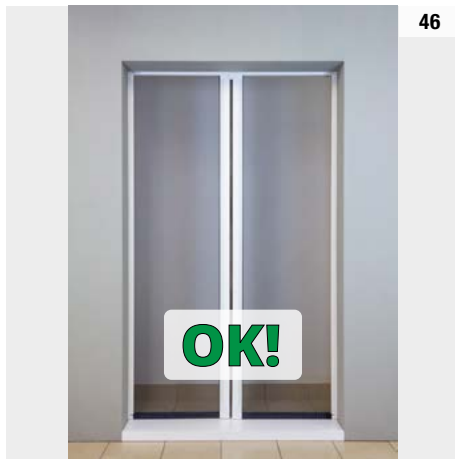
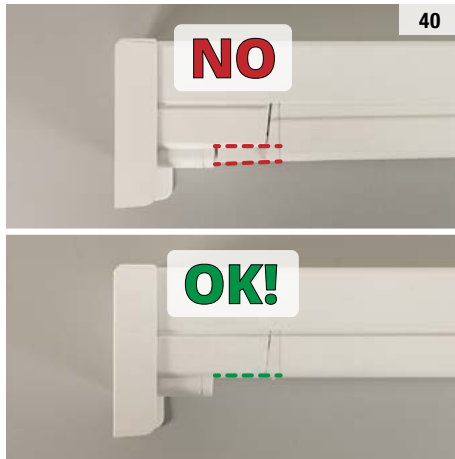
2

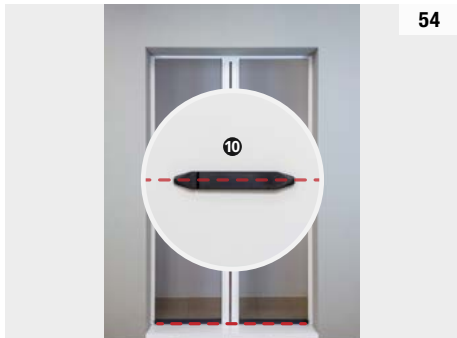
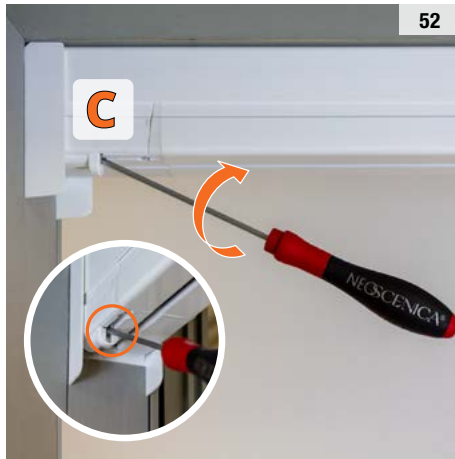
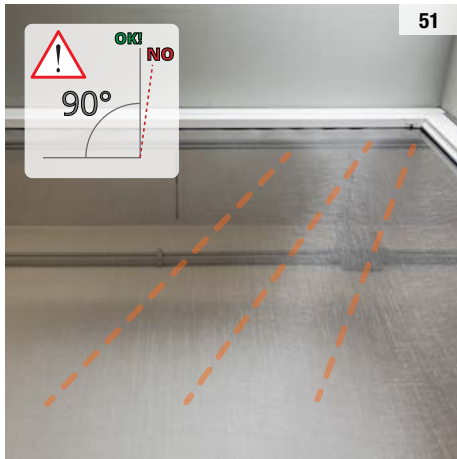




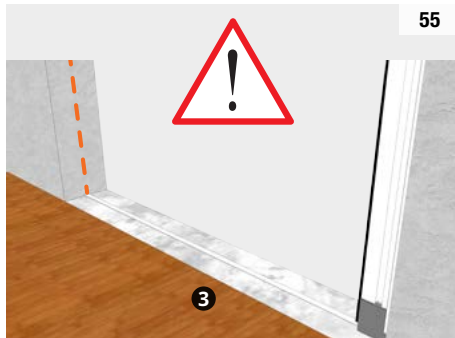








Piastrina a pavimento.
Sgrassare e asciugare la superficie di fissaggio prima di incollare il biadesivo: la completa adesione si ottiene dopo almeno 24 ore.



Profilo di scorrimento. Accessorio complementare.
Installazione a discrezione.



Sgrassare e asciugare la superficie di fissaggio prima di incollare il biadesivo: la completa adesione si ottiene dopo almeno 24 ore.