

SAFETY NOTE

- This appliance can be used by children aged from 8 years and above and persons with reduced physical, sensory or mental capabilities or lack of experience and knowledge if they have been given supervision or instruction concerning use of the appliance in a safe way and understand the hazards involved.
- Children shall not play with the appliance.
- Cleaning and user maintenance shall not be made by children without supervision.
- If the supply cord is damaged, it must be replaced by the manufacturer, its service agent or similarly qualified persons in order to avoid a hazard.
- WARNING:** the drive shall be disconnected from its power source during cleaning, maintenance and when replacing parts.
- The instructions shall state that the A-weighted emission sound pressure level of the drive is equal to or less than 70 dB(A), e.g. by writing $L_{pA} \leq 70$ dB(A).
- The mass and the dimension of the driven part shall be compatible with the rated torque and rated operating time.
- The type of driven part the drive is intended for.
- WARNING:** Important safety instructions. It is important for the safety of persons to follow these instructions. Save these instructions.
- Do not allow children to play with fixed controls. Keep remote controls away from children.
- Frequently examine the installation for imbalance and signs of wear or damage to cables and springs. Do not use if repair or adjustment is necessary.
- Watch the moving shutter and keep people away until the shutter is completely closed.
- WARNING:** Important safety instructions. Follow all instructions, since incorrect installation can lead to severe injury.
- Before installing the drive, remove any unnecessary cords and disable any equipment not needed for powered operation.



DM35(45)F/SW, DM45E/SW

Instruction | A-04



Features

- Built-in Receiver
- Limit Fine Adjustment
- Switch Rotating Direction
- Reset to Factory Mode
- Electronic Limit
- Jog & Tit
- Program Button
- Radio Lock Function
- Sleeping Setting Limit
- Preferred Stop Position
- Stall Protection
- Smart APP Control

Fields of Application



The motor is suitable for motorization of roller blinds.

Specifications

Working Temperature: -10°C ~ +45°C	Radio Frequency: 433.92MHz
Rated Voltage: AC 120V/60Hz; AC 220V/60Hz; AC 230V/50Hz	Thermal Protection Time: 4 minutes

* For more motor models and specific torque, please refer to the nameplate.

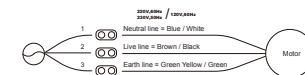
Attention

Never drop, knock, drill or submerge the motor. Keep the power cable in right position as following. Important safety instructions to be read before installation. Incorrect installation can lead to serious injury and will void manufacturer's liability and warranty.

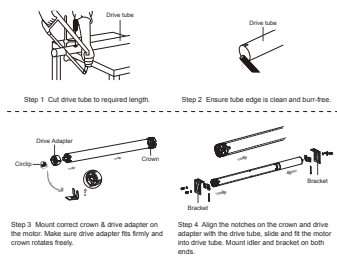


Wiring

Three wires: AC 120V/60Hz; AC 220V/60Hz; AC 230V/50Hz



Motor Installation



Caution

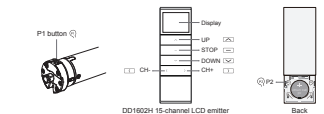
- Do not expose motor to humid or extreme temperature conditions.
- Do not drill into motor.
- Do not cut the antenna and keep it clear from metal objects.
- Do not allow children to play with this device.
- If power cable or connector is damaged, do not use.
- Ensure correct crown and drive adapter are used.
- Ensure power cable and aerial are clear and protected from moving parts.
- Cable routed through walls shall be properly isolated.
- Motor is to be mounted in horizontal position only.
- Before installation, remove unnecessary cords and disable equipment not needed for powered operation.
- If installation and programming to be performed by a qualified professional, use or modification outside the scope of this instruction may void warranty.

Important Safety Instructions To Be Read Prior To Operation.

Setting Notice

- Please read following points of attention carefully before setting.
- Please use accessories kits to protect the wires which are not used.
 - Operating:
 - The valid interval of the emitter button is 6s, the emitter will quit the set after 6s.
 - The motor will run or beep for hint, please do the next step after the hint.
 - Set limit position:
 - After the upper/lower limit setting, and the upper/lower limit position can't at the same position.
 - After limit setting, with power off and memory function.
 - Limit limits will clear all limit memory.
 - It will not limit setting when program there is no operation for 2 minutes.
 - If the emitter lost, please setting up again with new emitter.
 - One motor can store maximum 10 channels; after fully stored, only the last one will be covered casually.

Button Instructions



- Functions of P1 button
- Cycle Operation:** Press P1 button once and every press the motor will run upward → stop → downward → stop casually.
 - Pairing or Pair Additional Emitter:** Press P1 button for 2S, motor jog once, release button and long beep once, motor is ready for pairing or pair additional emitter.
 - WiFi APP pairing:** Press P1 button for 2S, motor jog once, release button and long beep once, then the motor enter the WiFi APP pairing status.
 - Radio Lock:** Press and hold P1 button for 6S, motor jog once, release button and beep twice, the motor enters radio lock status, the motor won't receive any signal, press P1 button once or the motor is powered off to disable Radio Lock.
 - Switch Direction:** Press and hold P1 button for 10S, motor jog once, release button and beep 3 times, the running direction of the motor has been changed.
 - Reset to Factory Mode:** Press and hold P1 button for 14S, motor jog once, release button and beep 4 times, the motor has been reset to factory mode.

Essential Settings

Step 1 to 3 must be completed to ensure proper operation.

1 Pairing

- Press P1 button for 2S (1 jog), release button and long beep once, within 10S, press STOP for 2S (2 jogs and 3 beeps), the motor has been paired successfully.

* If no limits, this operation will be pairing if with limits, this operation will be pairing additional emitter.

2 Switch Rotating Direction (Optional)

Press UP and motor runs downwards, try below to switch direction.

UP + DOWN → Press and hold UP and DOWN buttons simultaneously for 2S (1 jog), the direction has been switched successfully.

* The motor needs to be in the reversing operation without limit.

3 Setting Upper and Lower Limits

1 Set upper limit

UP + UP + STOP → Press UP for 2S, operate the motor to desired upper limit position, press and hold UP and STOP buttons simultaneously for 2S (2 jogs and 3 beeps), upper limit is set.

2 Set lower limit

DOWN + DOWN + STOP → Press DOWN for 2S, operate the motor to desired lower limit position, press and hold DOWN and STOP buttons simultaneously for 2S (2 jogs and 3 beeps), lower limit is set.

* It's freely to set the upper limit or lower limit firstly. In the no-limit state, the motor jog runs. Press and hold UP or DOWN for 2S to run continuously, after the limit is set, the motor runs continuously.

4 Add A Preferred Position

1 Set preferred position

P2 → STOP → STOP → Check both upper and lower limits are set. Operate the product to desired preferred position. Press P2 (1 jog and 1 beep), press STOP (1 jog and 1 beep), STOP again (2 jogs and 3 beeps), the preferred position is set.

* Press STOP for 2S, the motor moves to preferred position automatically.

2 Delete preferred position

P2 → STOP → STOP → Press P2 (1 jog and 1 beep), press STOP (1 jog and 1 beep), STOP again (1 jog and 1 long beep), the preferred position is deleted.

5 Adjust Limits

1 Adjusting the upper limit position

UP + STOP → UP → DOWN → UP + STOP → Press UP and STOP buttons simultaneously for 5S (1 jog and 1 long beep), operate the product to desired new upper limit position, press and hold UP and STOP buttons simultaneously for 2S (2 jogs and 3 beeps), the new upper limit is programmed successfully.

DOWN + STOP → UP → DOWN → DOWN + STOP → Press and hold DOWN and STOP buttons simultaneously for 5S (1 jog and 1 long beep), operate the product to desired new lower limit position, press and hold DOWN and STOP buttons simultaneously for 2S (2 jogs and 3 beeps), the new lower limit is programmed successfully.

2 Adjusting the lower limit position

DOWN + STOP → UP → DOWN → DOWN + STOP → Press and hold DOWN and STOP buttons simultaneously for 5S (1 jog and 1 long beep), operate the product to desired new lower limit position, press and hold DOWN and STOP buttons simultaneously for 2S (2 jogs and 3 beeps), the new lower limit is programmed successfully.

* This operation should be carried out when there is a limit. Enter Trim Mode for 2 minutes, if not confirm the new limit position, exit fine tuning mode and restore the original limit position.

6 Activate / Deactivate Jog / Tilt Mode

UP + DOWN + STOP → Press and hold UP and DOWN buttons simultaneously for 5S (1 jog), press STOP (1 jog and 1 long beep), Jog / Tilt mode is activated. If motor jogs twice and beeps 3 times, Jog / Tilt mode is deactivated.

* Press UP or DOWN for more than 2S, the motor continues run; it must be done after setting the upper limit and the lower limit. Close the jog & tilt function, the motor running continuously.

7 Pair / Unpair Additional Emitter

Method one

P2(a) → P2(a) → P2(b) → Press P2 (1 jog and 1 beep) and P2 (1 jog and 1 beep) on existing emitter, press P2 on new emitter to add (2 jogs and 3 beeps), new emitter is paired to the motor.

* Repeat same procedure will unpair additional emitter.

Method two

P2(a) → P2(a) → STOP(b) → Press P2 (1 jog and 1 beep) and P2 (1 jog and 1 beep) on existing emitter, press STOP on new emitter for 2S to add (2 jogs and 3 beeps), new emitter is paired to the motor.

Method three

P1 → STOP(b) → Press P1 button for 2S (1 jog), release button and long beep once, press STOP on new emitter for 2S to add (2 jogs and 3 beeps), new emitter is paired to the motor.

* (a) as existing emitter, (b) as new emitter to pair/unpair.

8 Delete All Emitters

P2 → STOP → P2 → Press P2 (1 jog and 1 beep), press STOP (1 jog and 1 beep), and press P2 (2 jogs and 3 beeps), all emitters are deleted.

* After deleting all emitters, keep the original limit information.

9 Cancel All Limits

P2 → DOWN → P2 → Press P2 (1 jog and 1 beep), press DOWN (1 jog and 1 beep), and press P2 (2 jogs and 3 beeps), all limits are cancelled.

* This operation is deleted along with the preferred position.

10 Smartphone Control

1. Download APP: Please scan below QR code to download Connector App or download directly from APP store or Google play by searching the name "Shade connector".



2. Create an APP account



3. Pairing the motor with APP following the APP instruction



* Please scan below QR code to learn more about link up DM564(F)SW or DM565(F)SW with home WiFi router, setup Connector APP, and establish connection with other IoT applications.



Quick Index

Settings	Steps
Pairing	P1 (hold down 2s) → Stop (hold down 2s)
Switch Rotating Direction	UP + Down (hold down 2s) → UP + Stop (hold down 2s)
Setting Upper and Lower Limits	1 Set upper limit: UP (hold down 2s) → UP + Stop (hold down 2s) 2 Set lower limit: Down (hold down 2s) → Down + Stop (hold down 2s)
Add / Delete Preferred Position	P2 → Stop → Stop
Adjust Limits	1 Adjusting the upper limit position: UP + Stop (hold down 2s) → UP or Down → UP + Stop (hold down 2s) 2 Adjusting the lower limit position: Down + Stop (hold down 2s) → UP or Down → Down + Stop (hold down 2s)
Activate / Deactivate Jog / Tilt Mode	UP + Down (hold down 2s) → Stop
Pair / Delete Additional Emitter	1 Pair / Delete Additional Emitter: P2(a) → P2(a) → P2(b) 2 Pair Additional Emitter: P2(a) → P2(a) → Stop(b) (hold down 2s) 3 Pair Additional Emitter: P1 (hold down 2s) → Stop(b) (hold down 2s)
Delete All Emitters	P2 → Stop → P2
Cancel All Limits	P2 → Down → P2
Smart APP Pairing	Press and hold P1 for about 2s until motor beep once, then tap "NEXT" button on the APP Press P2 twice, then tap "NEXT" button on the APP

Troubleshooting

Issues	Possible Causes	Solution
The motor has no response	Power failure or incorrect connection Emitter battery is low capacity Radio interference or blocking Out of radio control range	Check the power and cable connections. Follow wiring instructions. Replace battery. Check interference or install a shield and retest. Check if it is radio control range. Try to extend radio control range.
The emitter doesn't control the single motor	Multiple emitters are paired to the same channel	Always remove all individual emitters (with 6 motor functions)
The motor doesn't run or starts too slowly or make load noise	Connections are incorrect Encoder resolution is incorrect	Try to use multi-channel emitters to control multi-motor systems, always each channel to control one single motor. Check connections Check encoder resolution
The motor stops during the going up or going down	The motor has reached the lower limit Reaching the exceeds 4 min	Adjust the new lower limit Let the motor cool down for about 20 minutes.